

# San Dieguito

Union High School District

SAN DIEGUITO UNION HIGH SCHOOL  
DISTRICT  
BOARD OF TRUSTEES  
BOARD WORKSHOP  
MINUTES

Board of Trustees  
Joyce Dalessandro  
Barbara Groth  
Beth Hergesheimer  
Amy Herman  
John Salazar

Superintendent  
Ken Noah

THURSDAY, JULY 14, 2011  
1:30 PM

DISTRICT OFFICE, COMPUTER LAB  
710 ENCINITAS BLVD., ENCINITAS, CA. 92024

The Governing Board of the San Dieguito Union High School District held a Board Workshop on Thursday, July 14, 2011, at the above location.

### ATTENDANCE

#### BOARD OF TRUSTEES

All board members were present.

#### DISTRICT ADMINISTRATION

Ken Noah, Superintendent  
Eric Dill, Associate Superintendent, Business  
Rick Schmitt, Associate Superintendent, Educational Services  
Russ Thornton, Executive Director, Facilities  
Joann Schultz, Executive Assistant, Business  
Becky Banning, Recording Secretary / Executive Assistant to the Superintendent

1. CALL TO ORDER – The meeting was called to order at 1:30 PM.

### INFORMATION ITEMS

2. INTERIM UPDATE ON THE LONG RANGE FACILITIES PLANNING PROCESS

Superintendent Noah gave opening remarks; Mr. Dill and Mr. Thornton conducted the presentation. For details on topics, please see the attached document, which was distributed at the meeting.

3. ADJOURNMENT

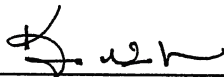
The meeting was adjourned at 4:35 PM.



Barbara Groth, Board Clerk

8-18-11

Date

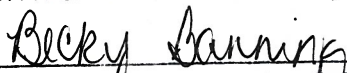


Ken Noah, Superintendent

8-18-11

Date

APPROVED IN PUBLIC MEETING OF THE  
BOARD OF TRUSTEES OF THE SAN DIEGUITO  
UNION HIGH SCHOOL DISTRICT 8-18-11



BECKY BANNING RECORDING SECRETARY  
BOARD OF TRUSTEES

# Interim Update

# Long Range Facilities Planning Process

July 14, 2011

Facilities Board Workshop

1:30 p.m.

# Table of Contents

- Introduction
- Long-Range Facilities Planning: Investing In Our Future
- History
  - Timeline
  - Committee Compositions
    - Long Range Task Force
    - Steering Committee
    - Site Committees
  - Vision and Assumptions

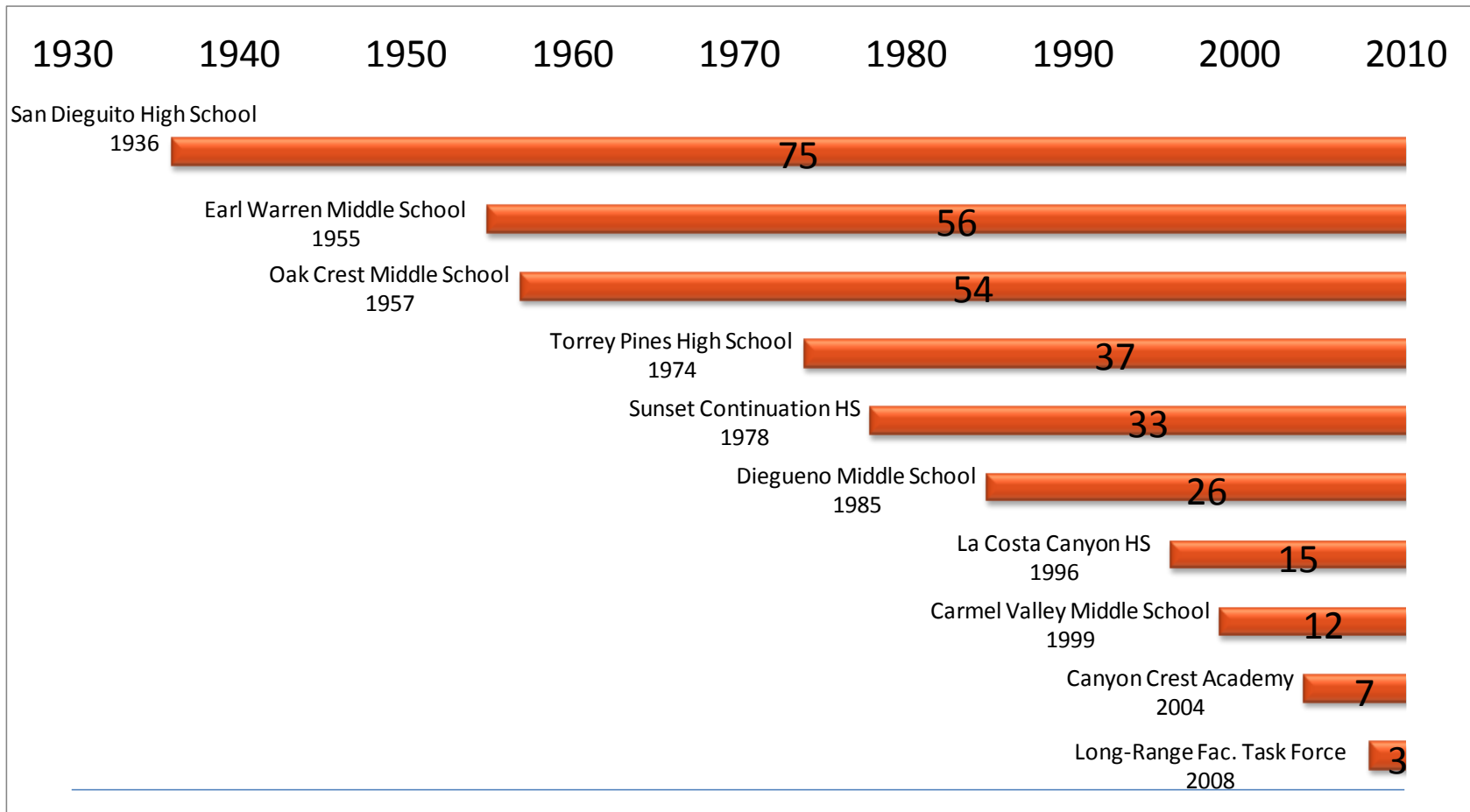
# Table of Contents

- Site Plans – Integration of 21<sup>st</sup> Century Learning Environments
  - North End
    - High Schools
    - Middle Schools
  - South End
    - High Schools
    - Middle Schools
  - Prototype Projects
  - New School Site Facilities
    - North End / La Costa Valley site
    - South End / Pacific Highlands Ranch site

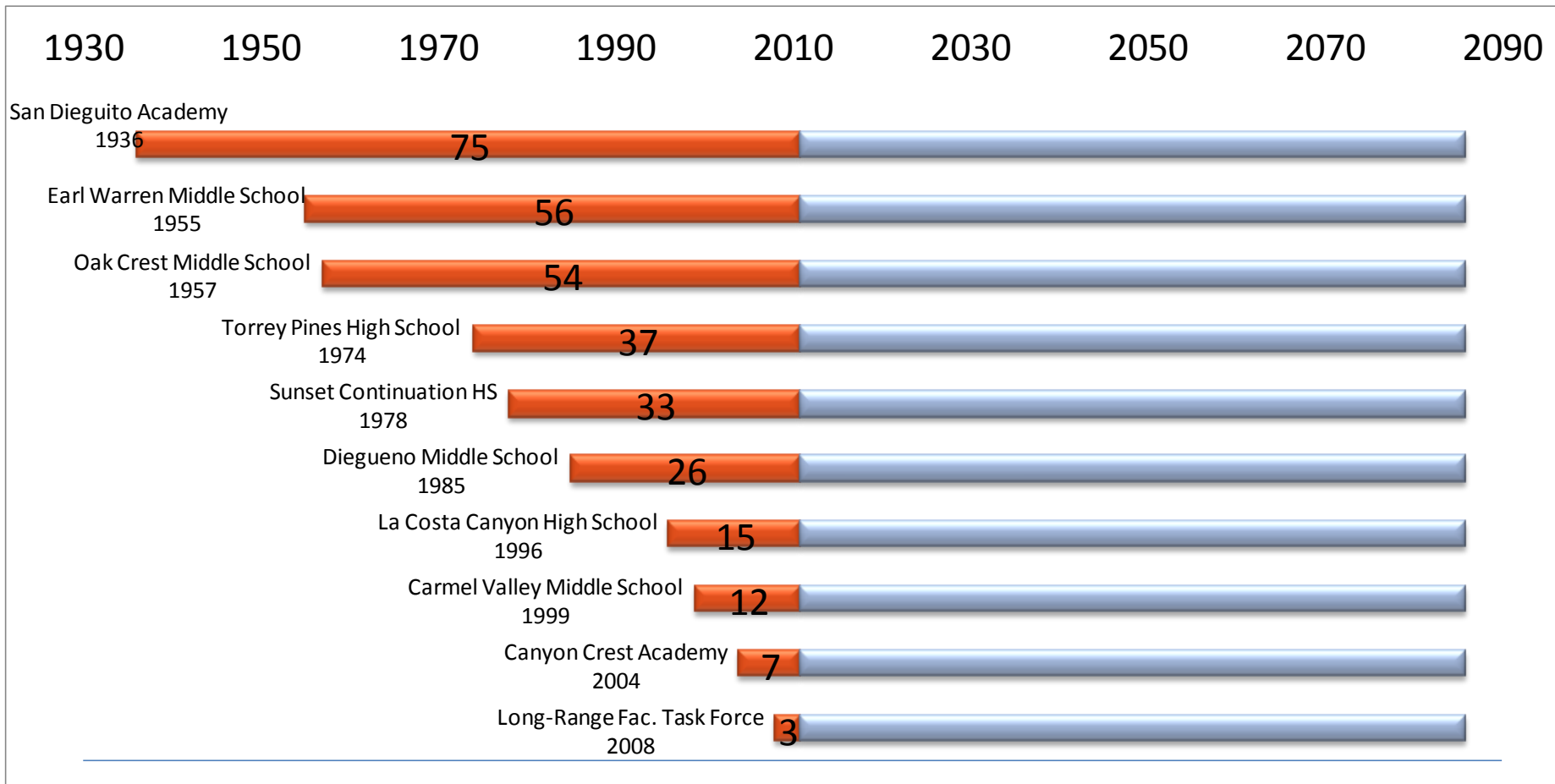
# Table of Contents

- Next Steps
  - Construction Management Cost Estimating
  - Prioritizing
  - Site Committees Review in Fall
  - Board Review in October/November

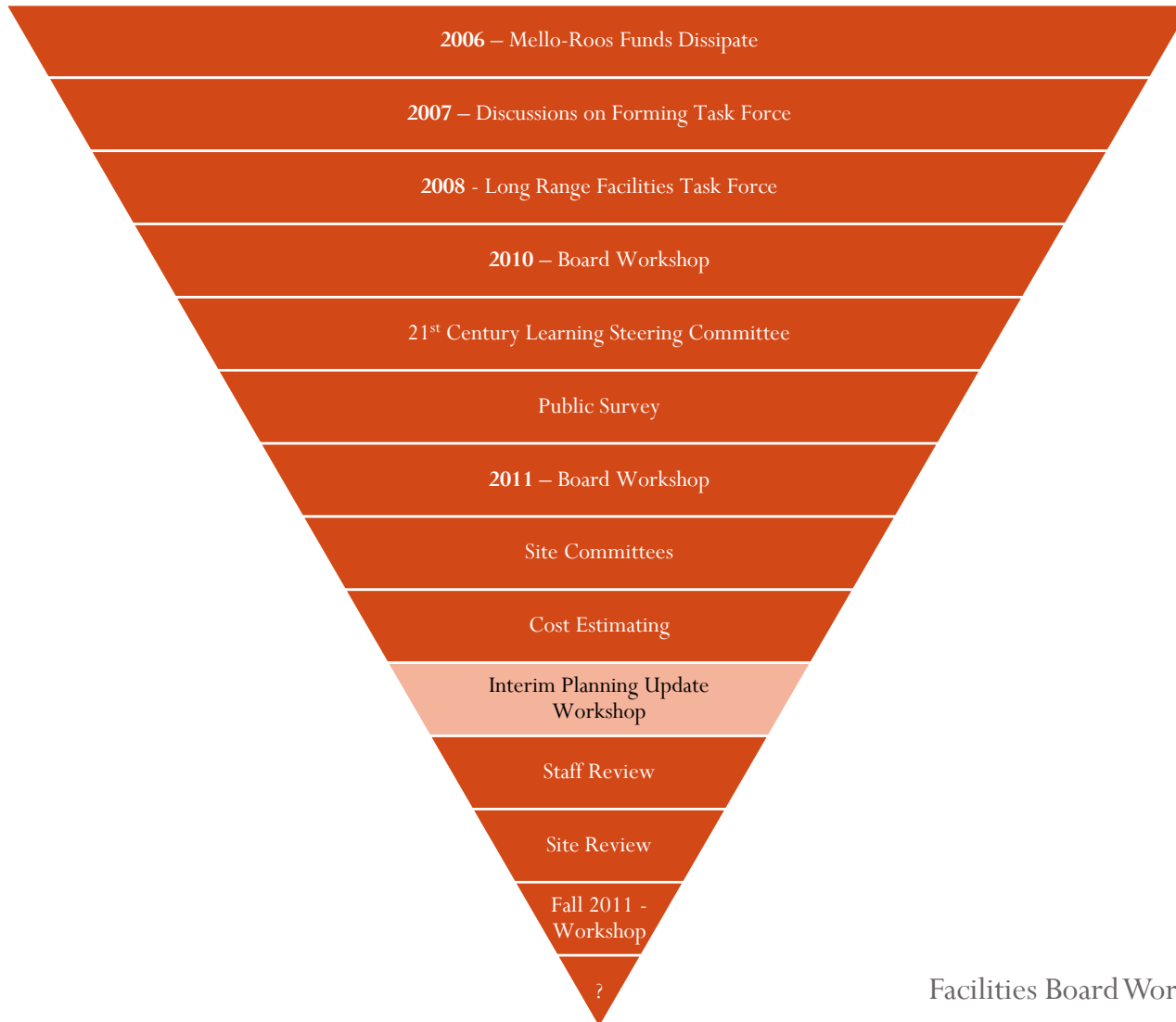
# Long-Range Facilities Planning: Investing In Our Future



# Long-Range Facilities Planning: Investing In Our Future



# Long-Range Facilities Planning





# Task Force Committee Composition

| Representative          | Name                                                                                    |
|-------------------------|-----------------------------------------------------------------------------------------|
| SDFA                    | Bob Croft, Duncan Brown, Mario Flores, Jerry Galiley, Chris Black                       |
| CSEA                    | Ron Tackett                                                                             |
| Student                 | Ilana Newman, Chloe Deis-Groff                                                          |
| Parent                  | Katy Goodman, Maureen Kasselmann, Jola Prosceno, JoAnn Schorn, Bart Smith, Chris Jaczko |
| Community Organization  | Crystal Crawford, Dan Morilak, Thomas Krynicky                                          |
| Business Community      | Mindy Scarano, Rich Houk                                                                |
| Regional Planning       | Patrick Murphy                                                                          |
| Building Administration | Terry Calen, Rick Ayala                                                                 |
| District Administration | Russ Thornton, Mike Coy                                                                 |
| Board Liaison           | Joyce Dalessandro                                                                       |
| Ex-Officio              | Ken Noah                                                                                |
| Facilitator             | Steve Ma, John Addleman                                                                 |

# Task Force Vision Statement

The vision for the facilities of San Dieguito Union High School District is focused on creating learning environments that embrace variety in teaching and learning styles, are responsive to our rapidly changing world, and will encourage students to be good stewards and citizens of a greater community. The three areas of focus are:

- Flexible, Adaptable, and Technology Rich Facilities
- Sustainable, High Performance Environments for Learning
- Community Focused Campuses

# Task Force Assumptions for Discussion

|                  |                                                                                                                                                                                                                                                                                                                                                                                                                                                                                                                                                                                                                                                                                                                                                                                                                                                                                                                                                                                                                                                                                                                                                                                                    |
|------------------|----------------------------------------------------------------------------------------------------------------------------------------------------------------------------------------------------------------------------------------------------------------------------------------------------------------------------------------------------------------------------------------------------------------------------------------------------------------------------------------------------------------------------------------------------------------------------------------------------------------------------------------------------------------------------------------------------------------------------------------------------------------------------------------------------------------------------------------------------------------------------------------------------------------------------------------------------------------------------------------------------------------------------------------------------------------------------------------------------------------------------------------------------------------------------------------------------|
| <b>Must Do</b>   | <b>Access Compliance Issues – Americans with Disabilities Act (ADA)</b><br><b>Fire and Life Safety Issues</b><br><b>Structural Safety Issues</b><br><b>Hazardous Materials Issues</b><br><b>Infrastructure Issues (Utilities, Fire Alarm, Security systems, Clock/Bell/Phone, etc.)</b><br><b>Envelope Issues (Roofs, Windows, etc.)</b>                                                                                                                                                                                                                                                                                                                                                                                                                                                                                                                                                                                                                                                                                                                                                                                                                                                           |
| <b>Should Do</b> | <b>Upgrade to 21st Century Learning Environment Standard</b> <ul style="list-style-type: none"><li>•<b>Technology: Wireless, Interactive, Multi-Media, etc.</b></li><li>•<b>Furniture and Equipment Upgrades</b></li><li>•<b>Finishes and Materials</b></li><li>•<b>Renovate for Programmatic Change: Flexible and Adaptable</b></li></ul> <b>Evaluate Core Facility Parity Issues; Resolve</b> <ul style="list-style-type: none"><li>•<b>Library</b></li><li>•<b>Administration</b></li><li>•<b>Labs: Science, for example</b></li><li>•<b>Gymnasium/ Multi-Purpose</b></li><li>•<b>Theater/ Arts</b></li><li>•<b>Athletics/ Fields</b></li></ul> <b>Improvements for Sustainable “Green” Design</b> <ul style="list-style-type: none"><li>•<b>Energy Management Systems</b></li><li>•<b>Alternative Energy</b></li><li>•<b>Lighting – Electric and Natural Daylighting</b></li><li>•<b>New/Renovate Buildings to Leadership in Energy and Environmental Design (LEED) and/or Collaborative for High Performance Schools (CHPS) Standards</b></li></ul> <b>Replace Portable Classrooms</b><br><br><b>Community Joint Use Facilities</b><br><br><b>Resolve Site Circulation and Parking Issues</b> |

# 21<sup>st</sup> Century Learning Environment Steering Committee Composition

| Representative                     | Name           |
|------------------------------------|----------------|
| Superintendent                     | Ken Noah       |
| Educational Services               | Rick Schmitt   |
| Principal, High School             | Brian Kohn     |
| Assistant Principal, Middle School | Brian Marcus   |
| Principal, Adult Education         | Denise Stanley |
| Technology                         | Mike Coy       |
| Facilities                         | Russ Thornton  |
| Facilities Planning                | John Addleman  |
| Business Services                  | Eric Dill      |

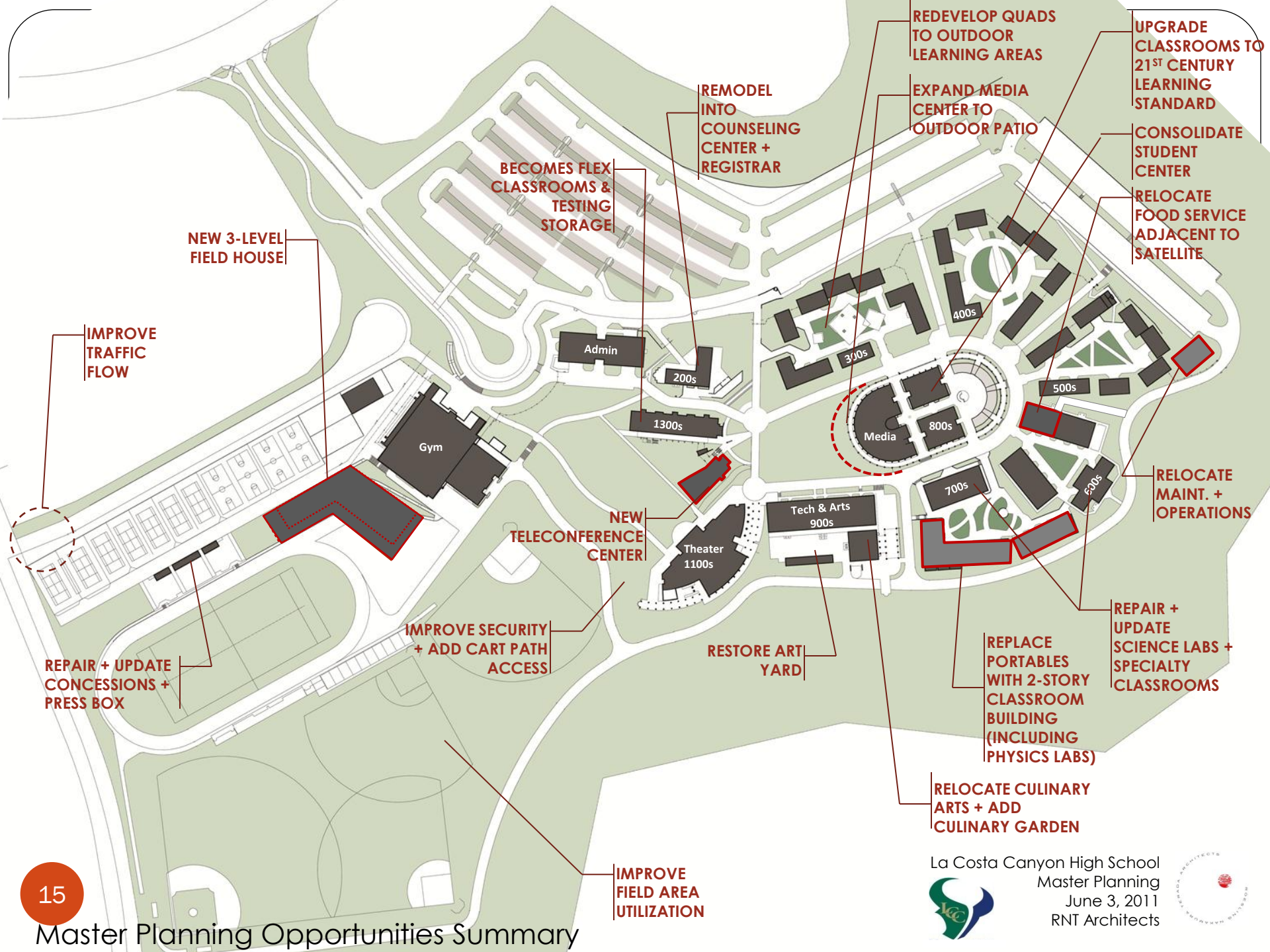
# Site Committees Composition

| Representatives       | Names                                                                                                                                                                                                                                                                                                                                                                                                                                                                                                                                                       |
|-----------------------|-------------------------------------------------------------------------------------------------------------------------------------------------------------------------------------------------------------------------------------------------------------------------------------------------------------------------------------------------------------------------------------------------------------------------------------------------------------------------------------------------------------------------------------------------------------|
| Students              | Ian MacGregor, Olivia Goldstein, Caitlin Falk                                                                                                                                                                                                                                                                                                                                                                                                                                                                                                               |
| Parents               | Kent Coykendall, Sandy Wimsatt, Rhonda Beacboard, Linda Wiener, T. Pat Stubbs, Debra Schade, Janis Cabot, Laura Eidelson, Maha Sfeir, Maggie Adams, Maha Achour                                                                                                                                                                                                                                                                                                                                                                                             |
| Educators             | Carol Anshuetz, Cindi Schildhouse, Debbie Elliott, Mario Flores, Kathryn Friedrichs, Neal Glasgow, Jeff Germano, Paul Brice, Russ Davidson, Elizabeth Reukema, Linda Nelson, Shawn Saville, Allison Brielle, Greg Balden, Brinn Belyea, Chris Drake, Barbara Swovelin, Krista Baldwin, Michael Godebu, Aaron Nelson, Elizabeth Ballinger, Mary Fritsch, Melissa Griffen, Jonathan Loeffler, Amy Olson, Tracy McCabe, Heather Michel, Katrina Peterson, Brett Williams, Erika Pavlovich, Robert Shockney, Brian Baum, Ted Thompson, Tracy Yates, John Labeta |
| Community Members     | Clarke Caines, Jim Mastrogany, Michael Tostado                                                                                                                                                                                                                                                                                                                                                                                                                                                                                                              |
| Administrators        | Rick Ayala, Kyle Ruggles, Michael Grove, Ryan Yee, Terry Calen, Brett Killeen, Anna Pedroza, Travis Wall, Laurie Francis, MaryAnne Nuskin, Bryan Marcus, Brian Kohn, Denise Stanley                                                                                                                                                                                                                                                                                                                                                                         |
| Architects            | MVE Institutional, Lionakis, Roesling Nakamura Terada, Westberg & White                                                                                                                                                                                                                                                                                                                                                                                                                                                                                     |
| Construction Managers | Barnhart-Balfour-Beatty, Gilbane, Erickinson-Hall, Sundt, Rudolph & Sletten                                                                                                                                                                                                                                                                                                                                                                                                                                                                                 |
| Facilitators          | Eric Dill, Russ Thornton, John Addleman                                                                                                                                                                                                                                                                                                                                                                                                                                                                                                                     |

# North End – High Schools

- La Costa Canyon High School (1996)
- Preliminary Task Force Estimate: \$25,516,296

|                  |                                                                   |                              |
|------------------|-------------------------------------------------------------------|------------------------------|
| <b>Must Do</b>   | Access Compliance Issues – Americans with Disabilities Act (ADA)  | Meets or exceeds standards   |
|                  | Fire and Life Safety Issues                                       | Meets or exceeds standards   |
|                  | Structural Safety Issues                                          | Meets or exceeds standards   |
|                  | Hazardous Materials Issues                                        | Meets or exceeds standards   |
|                  | Infrastructure Issues                                             | Meets or exceeds standards   |
|                  | Envelope Issues                                                   | Meets or exceeds standards   |
| <b>Should Do</b> | Upgrade to 21 <sup>st</sup> Century Learning Environment Standard | Upgrade Required             |
|                  | Core Facility Parity Issues; Library                              | Meets or exceeds standards   |
|                  | Core Facility Parity Issues; Administration                       | Meets or exceeds standards   |
|                  | Core Facility Parity Issues; Labs                                 | Meets or exceeds standards   |
|                  | Core Facility Parity Issues; Gym/MP                               | Meets or exceeds standards   |
|                  | Core Facility Parity Issues; Theater/Arts                         | Meets or exceeds standards   |
|                  | Core Facility Parity Issues; Athletics/Fields                     | Upgrade Required             |
|                  | Improvements for Sustainable “Green” Design                       | Upgrade Required             |
|                  | Replace Portable Classrooms                                       | Further Information Required |
|                  | Create Community Joint Use Facilities                             | Further Information Required |
|                  | Resolve Site Circulation and Parking Issues                       | Meets or exceeds standards*  |



**NEW 3-LEVEL  
FIELD HOUSE**

**IMPROVE  
TRAFFIC  
FLOW**

**BECOMES FLEX  
CLASSROOMS &  
TESTING  
STORAGE**

**REMODEL  
INTO  
COUNSELING  
CENTER +  
REGISTRAR**

**REDEVELOP QUADS  
TO OUTDOOR  
LEARNING AREAS**

**EXPAND MEDIA  
CENTER TO  
OUTDOOR PATIO**

**UPGRADE  
CLASSROOMS TO  
21<sup>ST</sup> CENTURY  
LEARNING  
STANDARD**

**CONSOLIDATE  
STUDENT  
CENTER**

**RELOCATE  
FOOD SERVICE  
ADJACENT TO  
SATELLITE**

**Gym**

**Admin**

**200s**

**1300s**

**Media**

**700s**

**400s**

**300s**

**800s**

**500s**

**500s**

**RELOCATE  
MAINT. +  
OPERATIONS**

**IMPROVE SECURITY  
+ ADD CART PATH  
ACCESS**

**NEW  
TELECONFERENCE  
CENTER**

**Theater  
1100s**

**RESTORE ART  
YARD**

**Tech & Arts  
900s**

**REPLACE  
PORTABLES  
WITH 2-STORY  
CLASSROOM  
BUILDING  
(INCLUDING  
PHYSICS LABS)**

**REPAIR +  
UPDATE  
SCIENCE LABS +  
SPECIALTY  
CLASSROOMS**

**REPAIR + UPDATE  
CONCESSIONS +  
PRESS BOX**

**RELOCATE CULINARY  
ARTS + ADD  
CULINARY GARDEN**

**IMPROVE  
FIELD AREA  
UTILIZATION**







**DESERT:** Casual Outdoor Gathering Spaces of Varied Sizes

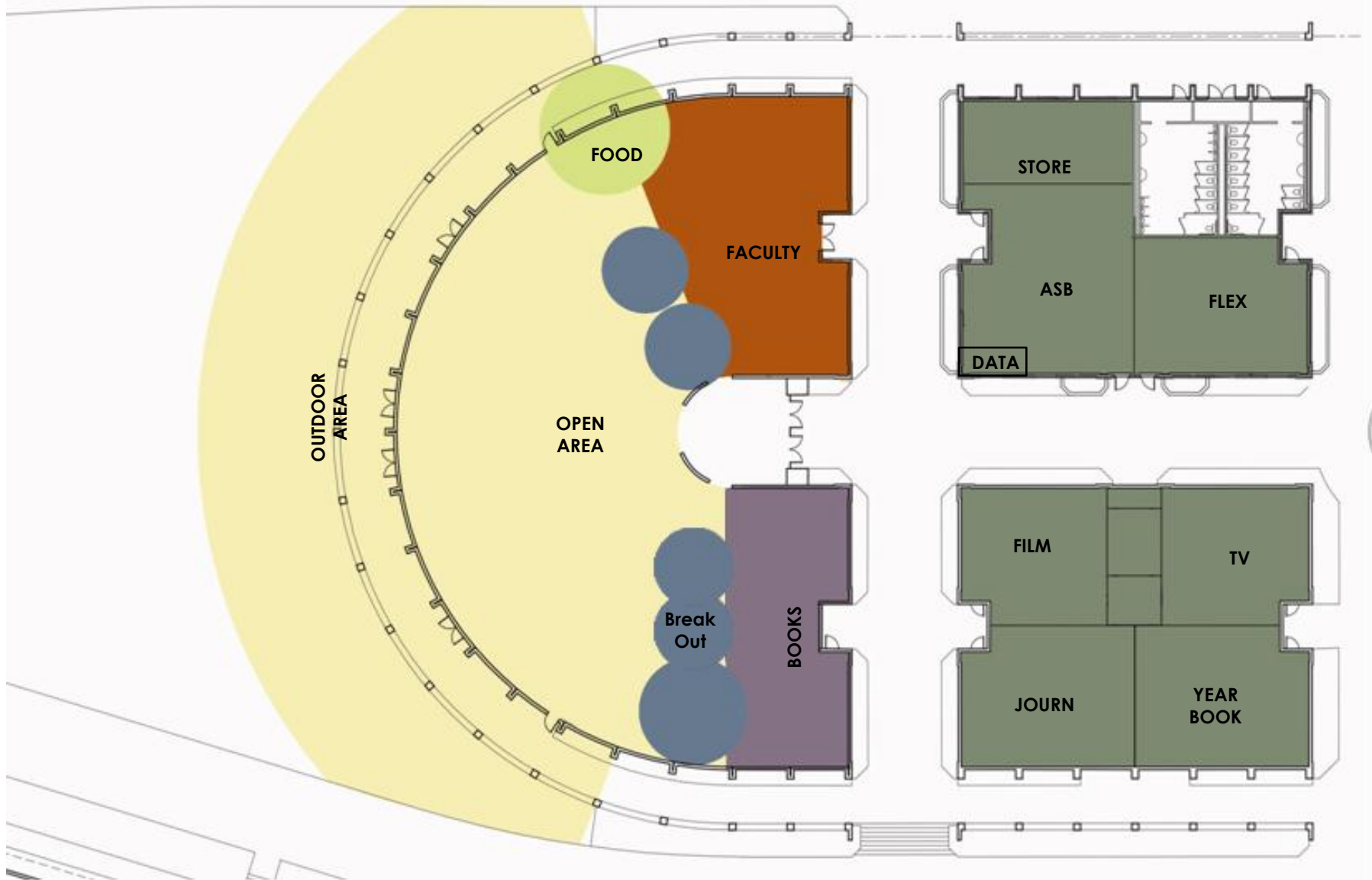


**ALPINE:** Larger Outdoor Meeting with Stepped Seating



**ARROYO:** Outdoor Rooms Carved by "Dry River" feature





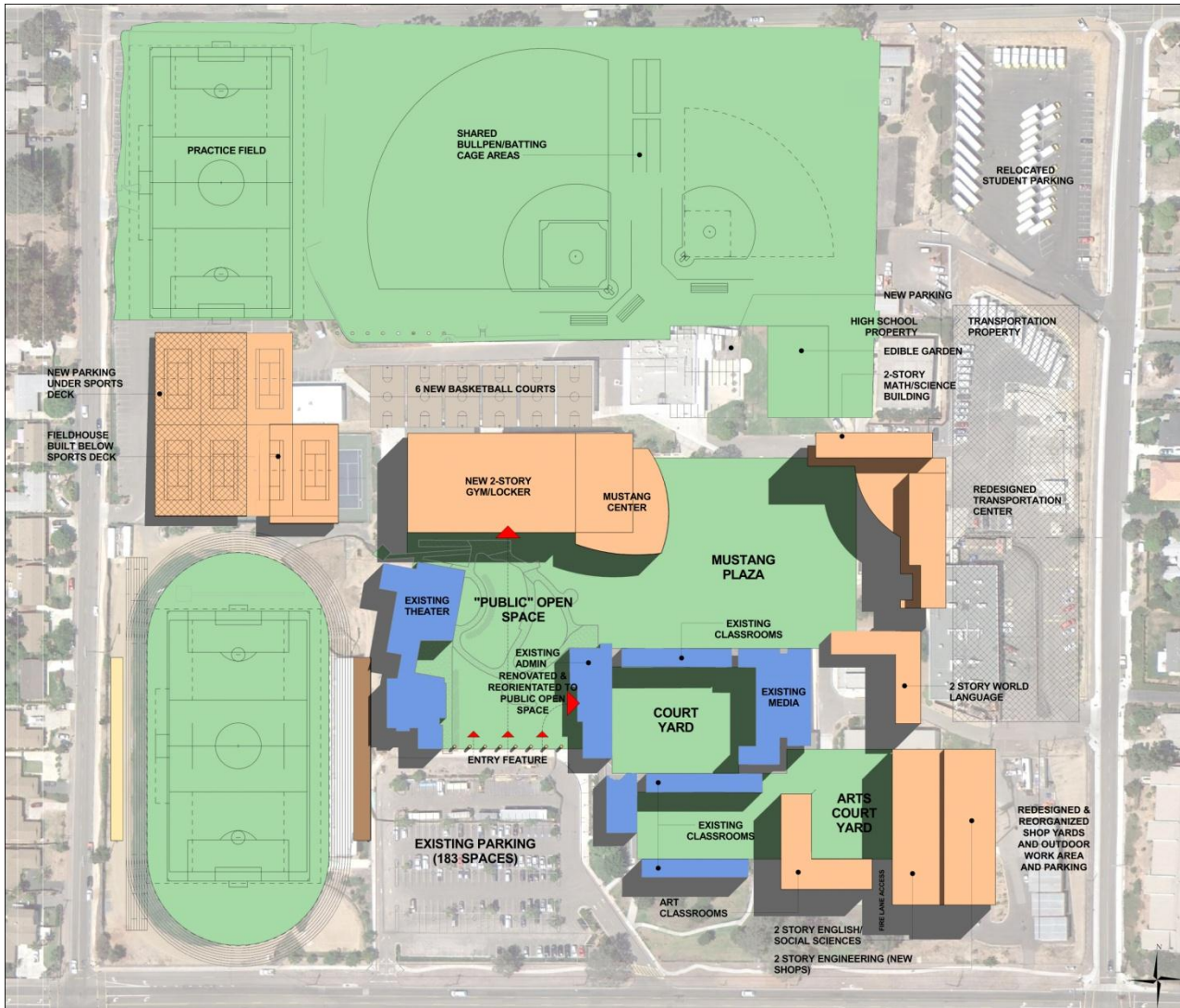
Framing open area

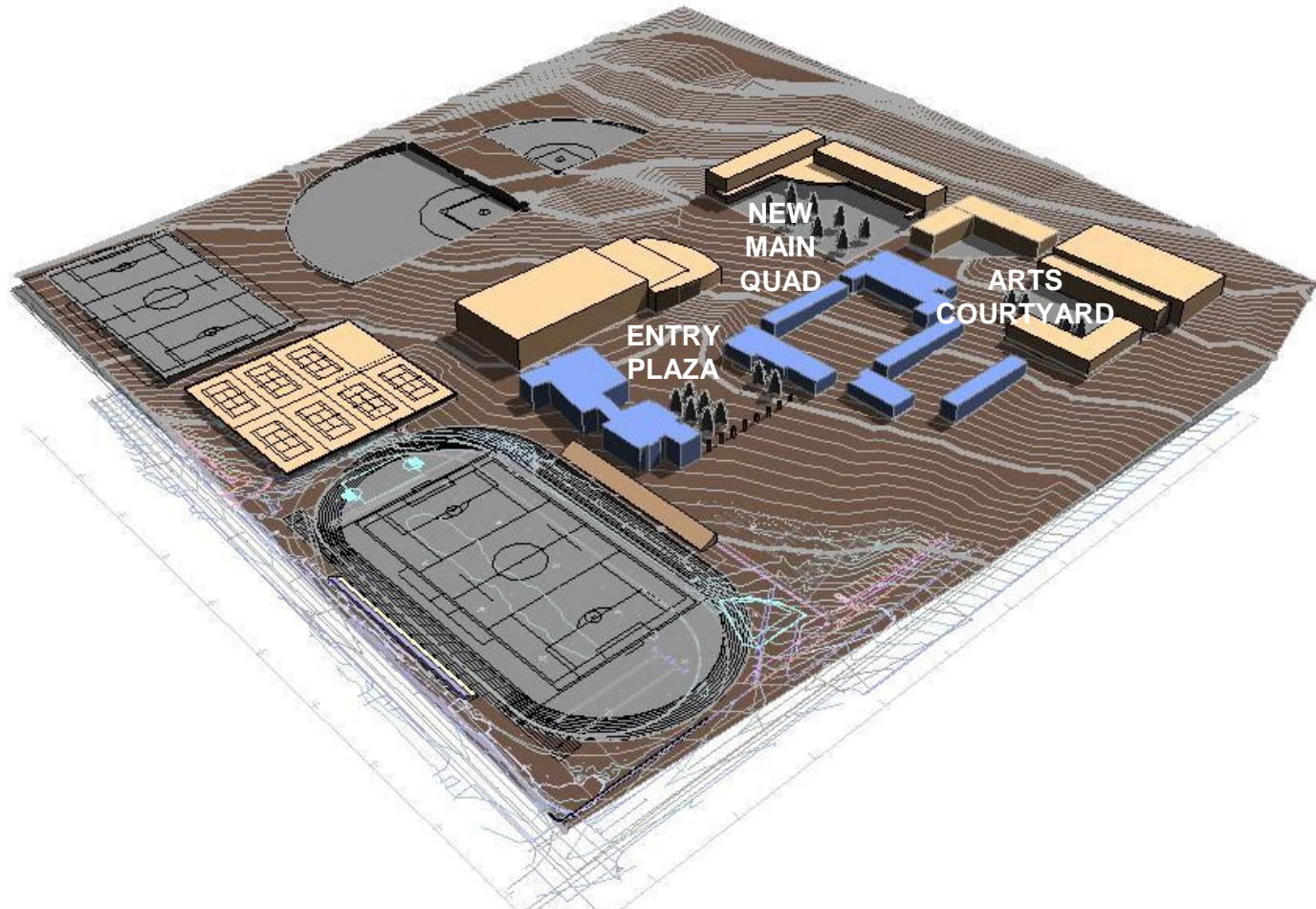


- San Dieguito High School Academy (1936)
- Preliminary Task Force Estimate: \$54,171,826

|                  |                                                                   |                                     |
|------------------|-------------------------------------------------------------------|-------------------------------------|
| <b>Must Do</b>   | Access Compliance Issues – Americans with Disabilities Act (ADA)  | <b>Upgrade Required</b>             |
|                  | Fire and Life Safety Issues                                       | <b>Upgrade Required</b>             |
|                  | Structural Safety Issues                                          | <b>Upgrade Required</b>             |
|                  | Hazardous Materials Issues                                        | <b>Upgrade Required</b>             |
|                  | Infrastructure Issues                                             | <b>Upgrade Required</b>             |
|                  | Envelope Issues                                                   | <b>Upgrade Required</b>             |
| <b>Should Do</b> | Upgrade to 21 <sup>st</sup> Century Learning Environment Standard | <b>Upgrade Required</b>             |
|                  | Core Facility Parity Issues; Library                              | <b>Meets or exceeds standards</b>   |
|                  | Core Facility Parity Issues; Administration                       | <b>Upgrade Required</b>             |
|                  | Core Facility Parity Issues; Labs                                 | <b>Upgrade Required</b>             |
|                  | Core Facility Parity Issues; Gym/MP                               | <b>Upgrade Required</b>             |
|                  | Core Facility Parity Issues; Theater/Arts                         | <b>Meets or exceeds standards</b>   |
|                  | Core Facility Parity Issues; Athletics/Fields                     | <b>Upgrade Required</b>             |
|                  | Improvements for Sustainable “Green” Design                       | <b>Upgrade Required</b>             |
|                  | Replace Portable Classrooms                                       | <b>Further Information Required</b> |
|                  | Create Community Joint Use Facilities                             | <b>Further Information Required</b> |
|                  | Resolve Site Circulation and Parking Issues                       | <b>Upgrade Required</b>             |







### 3D MASSING STUDY

- **Sunset Continuation High School (1978)**

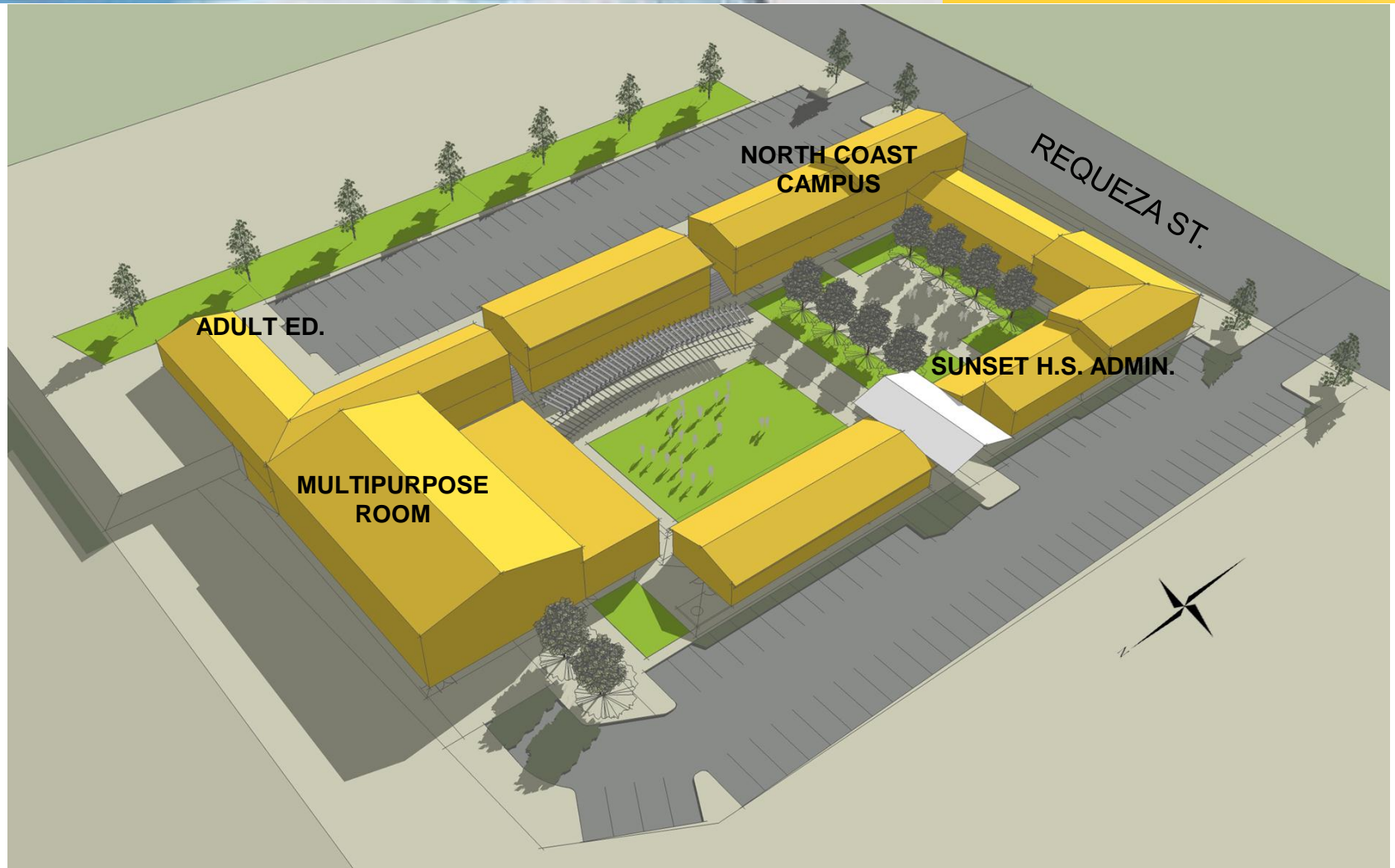
- North Coast High School and Adult Ed

- **Preliminary Task Force Estimate: \$6,339,775**

|                  |                                                                   |                                     |
|------------------|-------------------------------------------------------------------|-------------------------------------|
| <b>Must Do</b>   | Access Compliance Issues – Americans with Disabilities Act (ADA)  | <b>Upgrade Required</b>             |
|                  | Fire and Life Safety Issues                                       | <b>Upgrade Required</b>             |
|                  | Structural Safety Issues                                          | <b>Upgrade Required</b>             |
|                  | Hazardous Materials Issues                                        | <b>Upgrade Required</b>             |
|                  | Infrastructure Issues                                             | <b>Upgrade Required</b>             |
|                  | Envelope Issues                                                   | <b>Upgrade Required</b>             |
| <b>Should Do</b> | Upgrade to 21 <sup>st</sup> Century Learning Environment Standard | <b>Upgrade Required</b>             |
|                  | Core Facility Parity Issues; Library                              | <b>Not addressed</b>                |
|                  | Core Facility Parity Issues; Administration                       | <b>Upgrade Required</b>             |
|                  | Core Facility Parity Issues; Labs                                 | <b>Meets or exceeds standards</b>   |
|                  | Core Facility Parity Issues; Gym/MP                               | <b>Not addressed</b>                |
|                  | Core Facility Parity Issues; Theater/Arts                         | <b>Not addressed</b>                |
|                  | Core Facility Parity Issues; Athletics/Fields                     | <b>Not addressed</b>                |
|                  | Improvements for Sustainable “Green” Design                       | <b>Upgrade Required</b>             |
|                  | Replace Portable Classrooms                                       | <b>Further Information Required</b> |
|                  | Create Community Joint Use Facilities                             | <b>Further Information Required</b> |
|                  | Resolve Site Circulation and Parking Issues                       | <b>Upgrade Required</b>             |





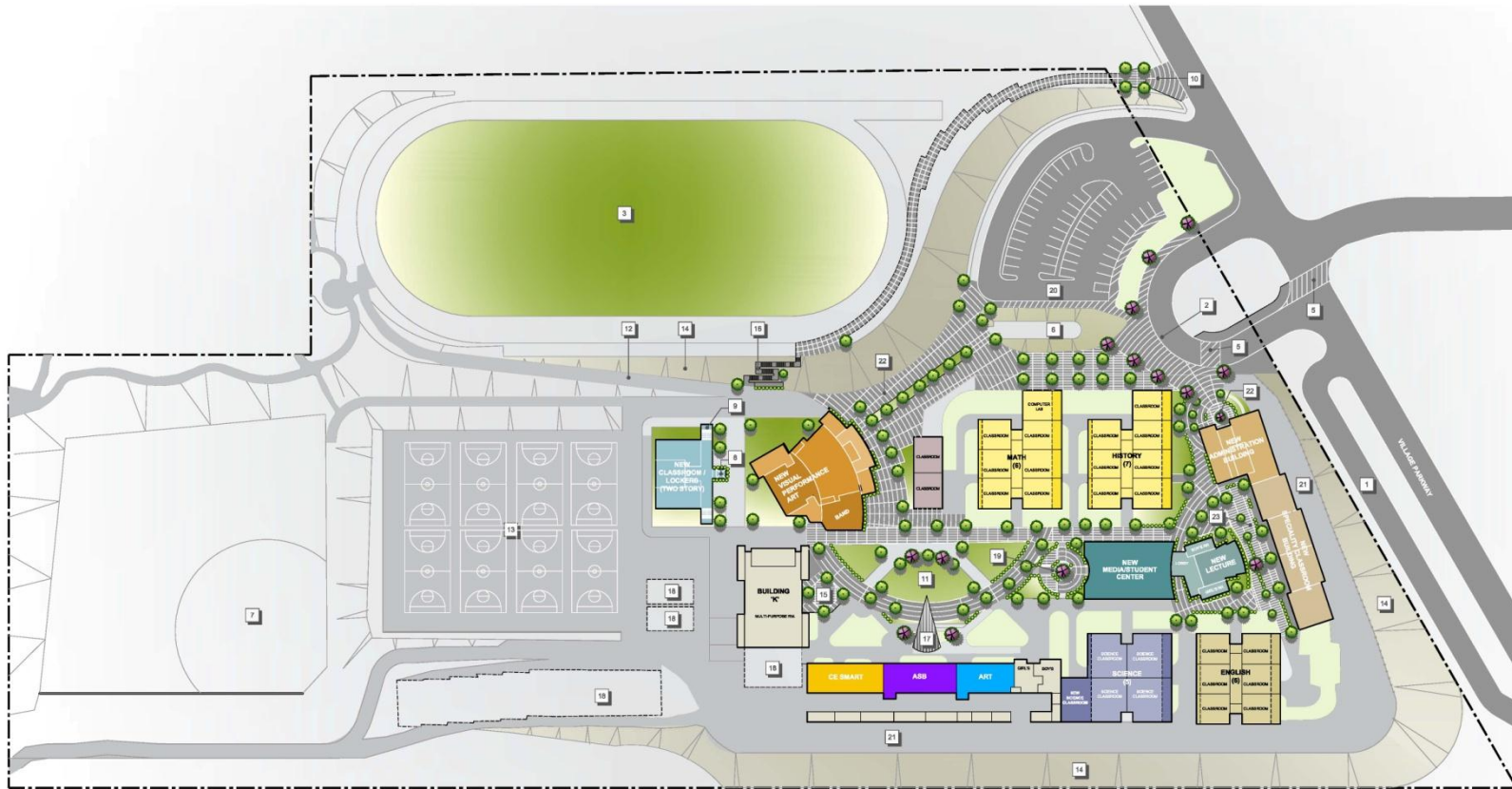




# North End – Middle Schools

- Diegueno Middle School (1985)
- Preliminary Task Force Estimate: \$18,867,680

|                  |                                                                   |                                     |
|------------------|-------------------------------------------------------------------|-------------------------------------|
| <b>Must Do</b>   | Access Compliance Issues – Americans with Disabilities Act (ADA)  | <b>Upgrade Required</b>             |
|                  | Fire and Life Safety Issues                                       | <b>Upgrade Required</b>             |
|                  | Structural Safety Issues                                          | <b>Meets or exceeds standards</b>   |
|                  | Hazardous Materials Issues                                        | <b>Meets or exceeds standards</b>   |
|                  | Infrastructure Issues                                             | <b>Upgrade Required</b>             |
|                  | Envelope Issues                                                   | <b>Upgrade Required</b>             |
| <b>Should Do</b> | Upgrade to 21 <sup>st</sup> Century Learning Environment Standard | <b>Upgrade Required</b>             |
|                  | Core Facility Parity Issues; Library                              | <b>Meets or exceeds standards</b>   |
|                  | Core Facility Parity Issues; Administration                       | <b>Meets or exceeds standards</b>   |
|                  | Core Facility Parity Issues; Labs                                 | <b>Meets or exceeds standards</b>   |
|                  | Core Facility Parity Issues; Gym/MP                               | <b>Meets or exceeds standards</b>   |
|                  | Core Facility Parity Issues; Theater/Arts                         | <b>Upgrade Required</b>             |
|                  | Core Facility Parity Issues; Athletics/Fields                     | <b>Meets or exceeds standards</b>   |
|                  | Improvements for Sustainable “Green” Design                       | <b>Upgrade Required</b>             |
|                  | Replace Portable Classrooms                                       | <b>Further Information Required</b> |
|                  | Create Community Joint Use Facilities                             | <b>Further Information Required</b> |
|                  | Resolve Site Circulation and Parking Issues                       | <b>Upgrade Required</b>             |



| LEGEND |                              |
|--------|------------------------------|
| 1      | EXISTING DRIVE OFF           |
| 2      | NEW DRIVE OFF                |
| 3      | TRACK AND FOOTBALL FIELD     |
| 4      | PARK                         |
| 5      | NEW FOOTBALL COURSE          |
| 6      | EXISTING BASE AREA           |
| 7      | EXISTING BASEBALL DIAMOND    |
| 8      | EXISTING                     |
| 9      | STAIRS                       |
| 10     | NEW DRIVE OFF                |
| 11     | PARK AREA                    |
| 12     | EXISTING PAUP                |
| 13     | EXISTING ATHLETIC COURSE     |
| 14     | EXISTING DRIVE               |
| 15     | NEW BASEBALL DIAMOND         |
| 16     | NEW CONCRETE STAIRS          |
| 17     | NEW DRIVE OFF                |
| 18     | EXISTING DRIVE TO BE REMOVED |
| 19     | EXISTING PLAZA               |
| 20     | EXISTING PARKING AREA        |
| 21     | EXISTING PARK TRACK ACCESS   |
| 22     | EXISTING DRIVE               |
| 23     | COURTYARD                    |

- Oak Crest Middle School (1957)
- Preliminary Task Force Estimate: \$18,949,515

|                  |                                                                   |                                     |
|------------------|-------------------------------------------------------------------|-------------------------------------|
| <b>Must Do</b>   | Access Compliance Issues – Americans with Disabilities Act (ADA)  | <b>Upgrade Required</b>             |
|                  | Fire and Life Safety Issues                                       | <b>Meets or exceeds standards</b>   |
|                  | Structural Safety Issues                                          | <b>Meets or exceeds standards</b>   |
|                  | Hazardous Materials Issues                                        | <b>Meets or exceeds standards</b>   |
|                  | Infrastructure Issues                                             | <b>Upgrade Required</b>             |
|                  | Envelope Issues                                                   | <b>Upgrade Required</b>             |
| <b>Should Do</b> | Upgrade to 21 <sup>st</sup> Century Learning Environment Standard | <b>Upgrade Required</b>             |
|                  | Core Facility Parity Issues; Library                              | <b>Meets or exceeds standards</b>   |
|                  | Core Facility Parity Issues; Administration                       | <b>Meets or exceeds standards</b>   |
|                  | Core Facility Parity Issues; Labs                                 | <b>Meets or exceeds standards</b>   |
|                  | Core Facility Parity Issues; Gym/MP                               | <b>Meets or exceeds standards</b>   |
|                  | Core Facility Parity Issues; Theater/Arts                         | <b>Upgrade Required</b>             |
|                  | Core Facility Parity Issues; Athletics/Fields                     | <b>Upgrade Required</b>             |
|                  | Improvements for Sustainable “Green” Design                       | <b>Upgrade Required</b>             |
|                  | Replace Portable Classrooms                                       | <b>Further Information Required</b> |
|                  | Create Community Joint Use Facilities                             | <b>Further Information Required</b> |
|                  | Resolve Site Circulation and Parking Issues                       | <b>Meets or exceeds standards</b>   |



- LEGEND**
- 1 NEW STADIUM DROP-OFF
  - 2 EXISTING BUILDING DROP
  - 3 NEW 100' x 60' TRACK AND HOCKEY FIELD
  - 4 EXISTING FIELD
  - 5 100' x 60' TRACK (LOWER LEVEL)
  - 6 EXISTING FIELD
  - 7 EXISTING FIELD
  - 8 EXISTING FIELD
  - 9 EXISTING FIELD
  - 10 EXISTING FIELD
  - 11 EXISTING 100' x 60' TRACK AND HOCKEY FIELD (LOWER LEVEL)
  - 12 CONCRETE ACCESSIBLE ROAD
  - 13 EXISTING 100' x 60' TRACK
  - 14 EXISTING FIELD
  - 15 NEW 100' x 60' TRACK (UPPER LEVEL)
  - 16 NEW 100' x 60' TRACK (UPPER LEVEL)
  - 17 VISUAL BUFFER
  - 18 EXISTING BUILDING OR PARKING
  - 19 EXISTING PLAZA
  - 20 EXISTING PARKING AREA
  - 21 EXISTING PARKING RECREATIONAL AREA
  - 22 EXISTING PARKING
  - 23 EXISTING PLAZA
  - 24 EXISTING FIELD
  - 25 EXISTING FIELD

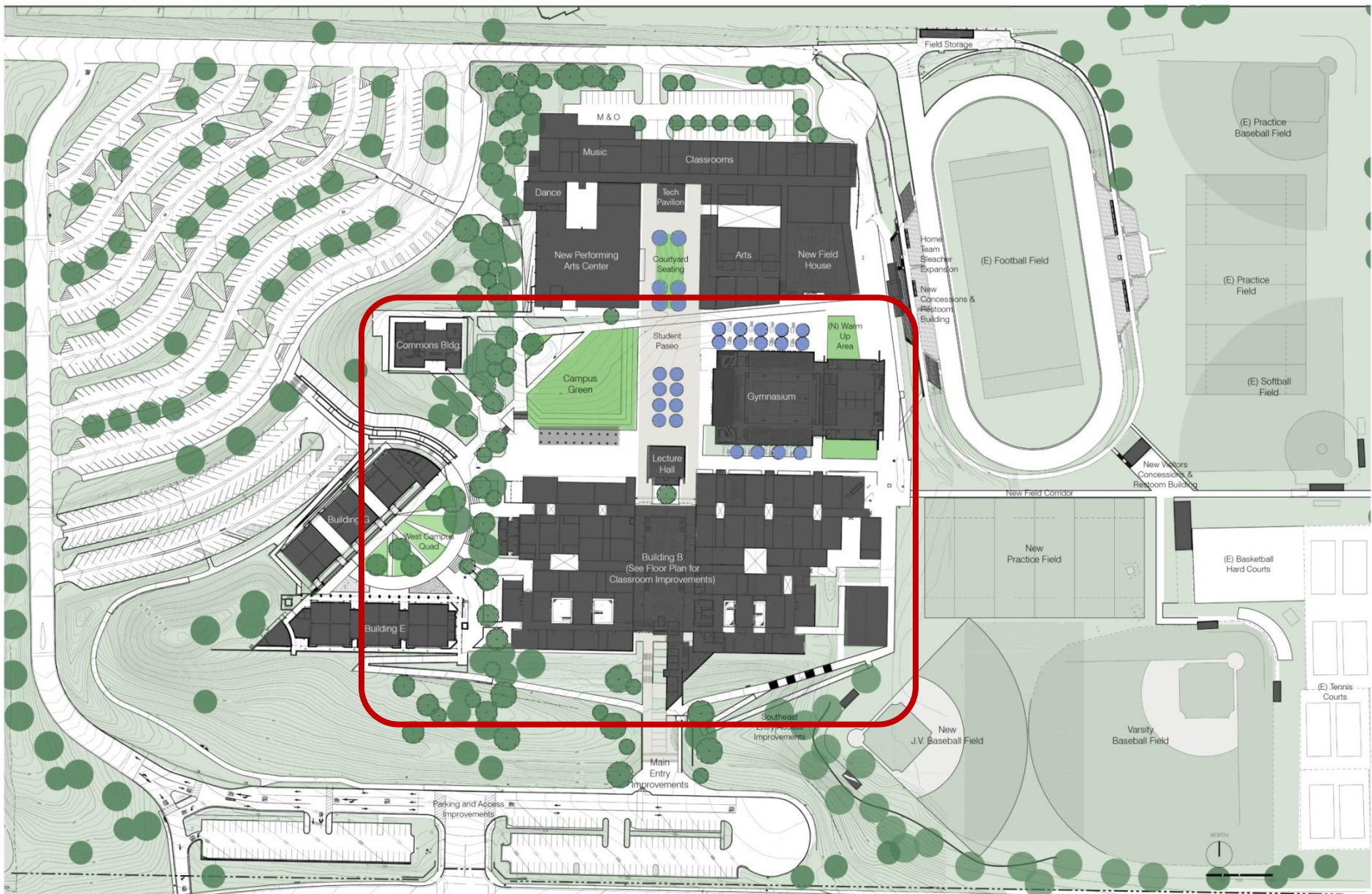
SCALE: 1" = 20'  
**SCHEME II**

# South End – High Schools

- Torrey Pines High School (1974)
- Preliminary Task Force Estimate: \$73,027,663

|                  |                                                                   |                                     |
|------------------|-------------------------------------------------------------------|-------------------------------------|
| <b>Must Do</b>   | Access Compliance Issues – Americans with Disabilities Act (ADA)  | <b>Upgrade Required</b>             |
|                  | Fire and Life Safety Issues                                       | <b>Upgrade Required</b>             |
|                  | Structural Safety Issues                                          | <b>Upgrade Required</b>             |
|                  | Hazardous Materials Issues                                        | <b>Upgrade Required</b>             |
|                  | Infrastructure Issues                                             | <b>Upgrade Required</b>             |
|                  | Envelope Issues                                                   | <b>Upgrade Required</b>             |
| <b>Should Do</b> | Upgrade to 21 <sup>st</sup> Century Learning Environment Standard | <b>Upgrade Required</b>             |
|                  | Core Facility Parity Issues; Library                              | <b>Upgrade Required</b>             |
|                  | Core Facility Parity Issues; Administration                       | <b>Upgrade Required</b>             |
|                  | Core Facility Parity Issues; Labs                                 | <b>Upgrade Required</b>             |
|                  | Core Facility Parity Issues; Gym/MP                               | <b>Upgrade Required</b>             |
|                  | Core Facility Parity Issues; Theater/Arts                         | <b>Upgrade Required</b>             |
|                  | Core Facility Parity Issues; Athletics/Fields                     | <b>Upgrade Required</b>             |
|                  | Improvements for Sustainable “Green” Design                       | <b>Upgrade Required</b>             |
|                  | Replace Portable Classrooms                                       | <b>Further Information Required</b> |
|                  | Create Community Joint Use Facilities                             | <b>Further Information Required</b> |
|                  | Resolve Site Circulation and Parking Issues                       | <b>Upgrade Required</b>             |





**Site Plan**

Torrey Pines High School Master Plan  
 San Diego Union High School District, June 2, 2011

Facilities Board Workshop 07-14-11





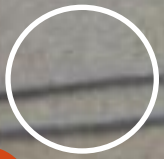
Second Floor

**Building B  
Floor Plan**

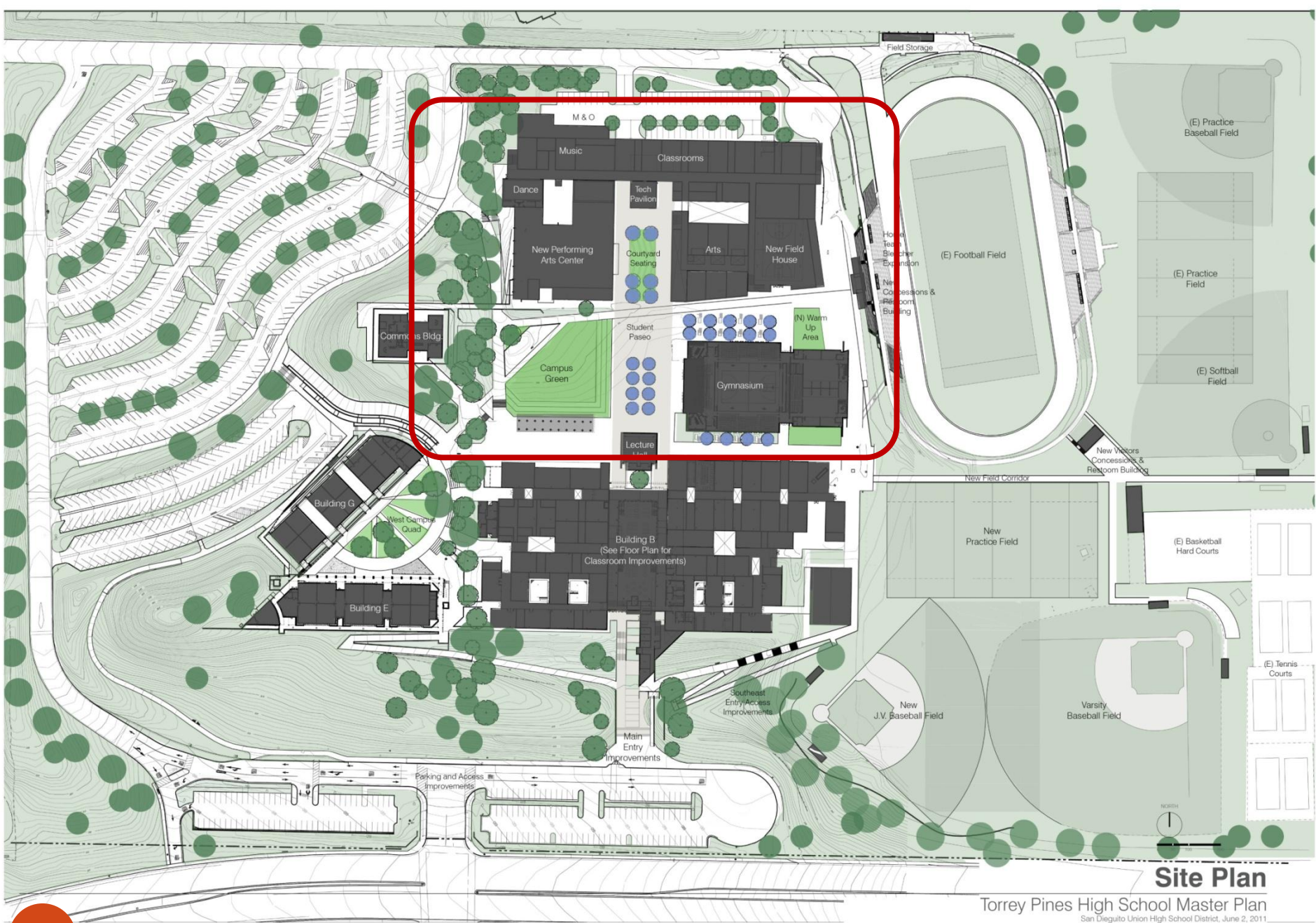


Del Mar Heights Road

North



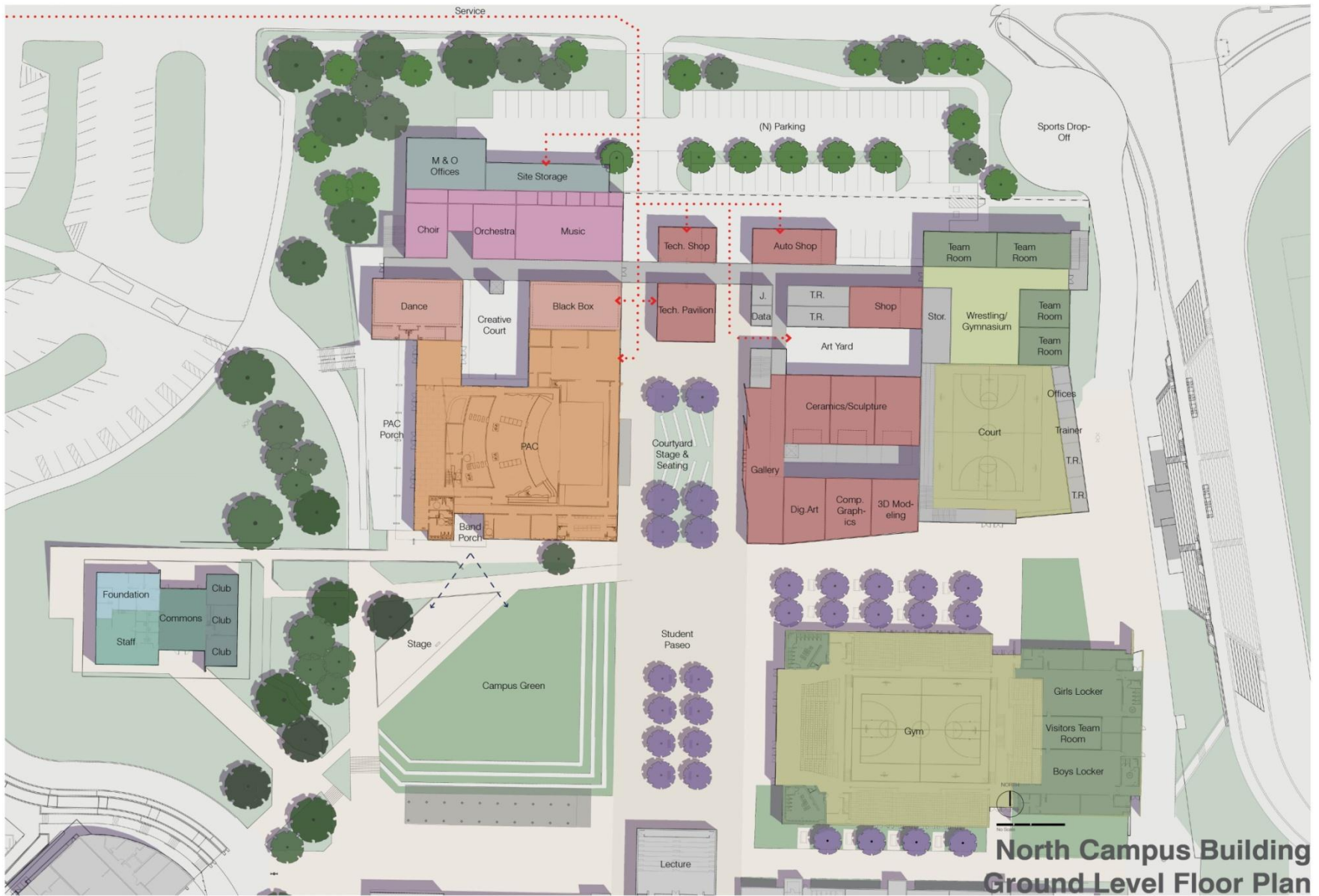




**Site Plan**

Torrey Pines High School Master Plan  
 San Diego Union High School District, June 2, 2011

Facilities Board Workshop 07-14-11

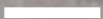


**North Campus Building  
Ground Level Floor Plan**



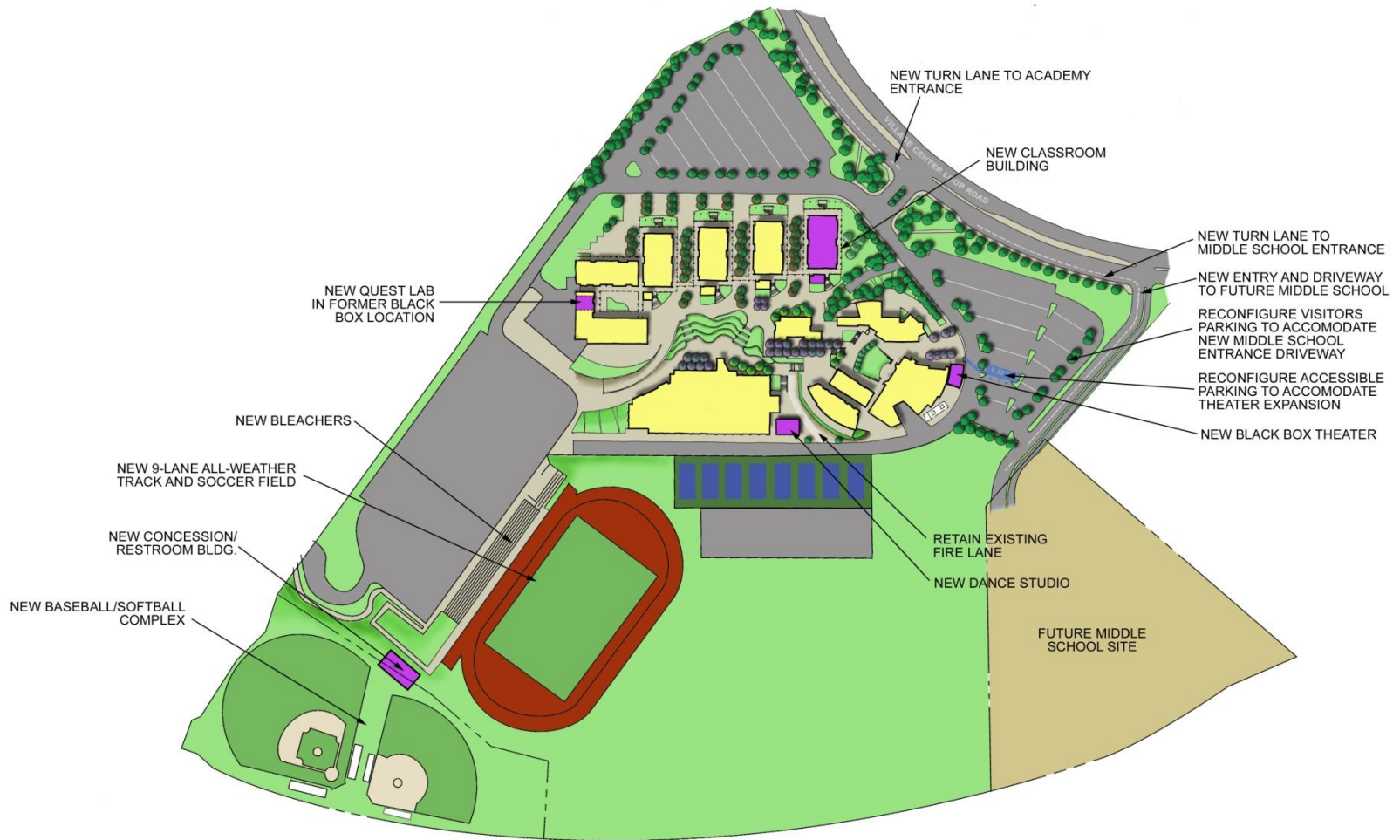
Del Mar  
Heights  
Road

North



- Canyon Crest Academy (2004)
- Preliminary Task Force Estimate: \$36,153,000

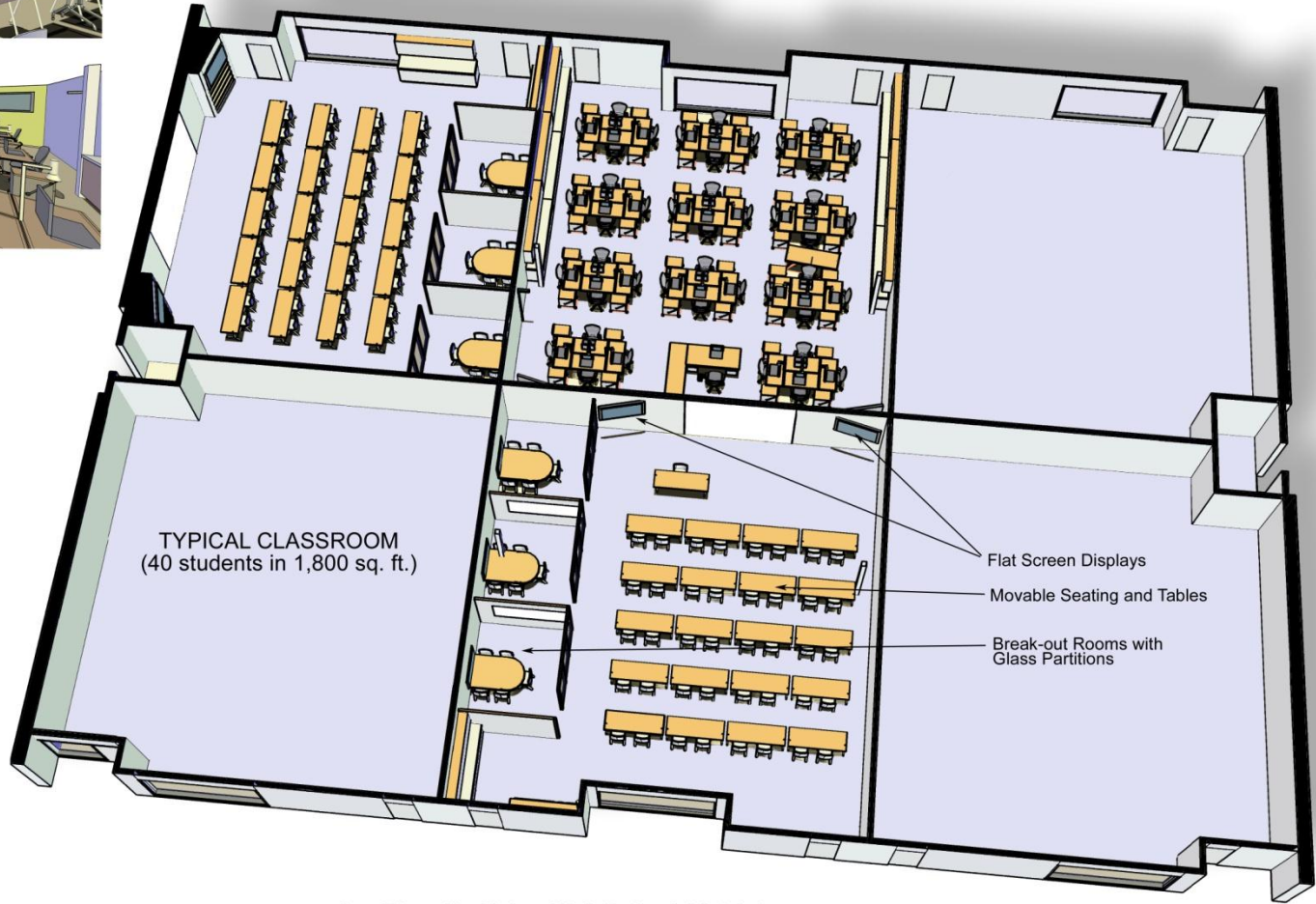
|                  |                                                                   |                              |
|------------------|-------------------------------------------------------------------|------------------------------|
| <b>Must Do</b>   | Access Compliance Issues – Americans with Disabilities Act (ADA)  | Meets or exceeds standards   |
|                  | Fire and Life Safety Issues                                       | Meets or exceeds standards   |
|                  | Structural Safety Issues                                          | Meets or exceeds standards   |
|                  | Hazardous Materials Issues                                        | Meets or exceeds standards   |
|                  | Infrastructure Issues                                             | Meets or exceeds standards   |
|                  | Envelope Issues                                                   | Meets or exceeds standards   |
| <b>Should Do</b> | Upgrade to 21 <sup>st</sup> Century Learning Environment Standard | Meets or exceeds standards   |
|                  | Core Facility Parity Issues; Library                              | Meets or exceeds standards   |
|                  | Core Facility Parity Issues; Administration                       | Meets or exceeds standards   |
|                  | Core Facility Parity Issues; Labs                                 | Meets or exceeds standards   |
|                  | Core Facility Parity Issues; Gym/MP                               | Meets or exceeds standards   |
|                  | Core Facility Parity Issues; Theater/ Arts                        | Meets or exceeds standards   |
|                  | Core Facility Parity Issues; Athletics/ Fields                    | Upgrade Required             |
|                  | Improvements for Sustainable “Green” Design                       | Upgrade Required             |
|                  | Replace Portable Classrooms                                       | Meets or exceeds standards   |
|                  | Create Community Joint Use Facilities                             | Further Information Required |
|                  | Resolve Site Circulation and Parking Issues                       | Meets or exceeds standards   |



San Dieguito Union High School District  
**Canyon Crest Academy Facilities Master Plan**  
**OVERALL SITE PLAN**







San Dieguito Union High School District  
**Canyon Crest Academy Facilities Master Plan**  
**CLASSROOM RECONFIGURATION**

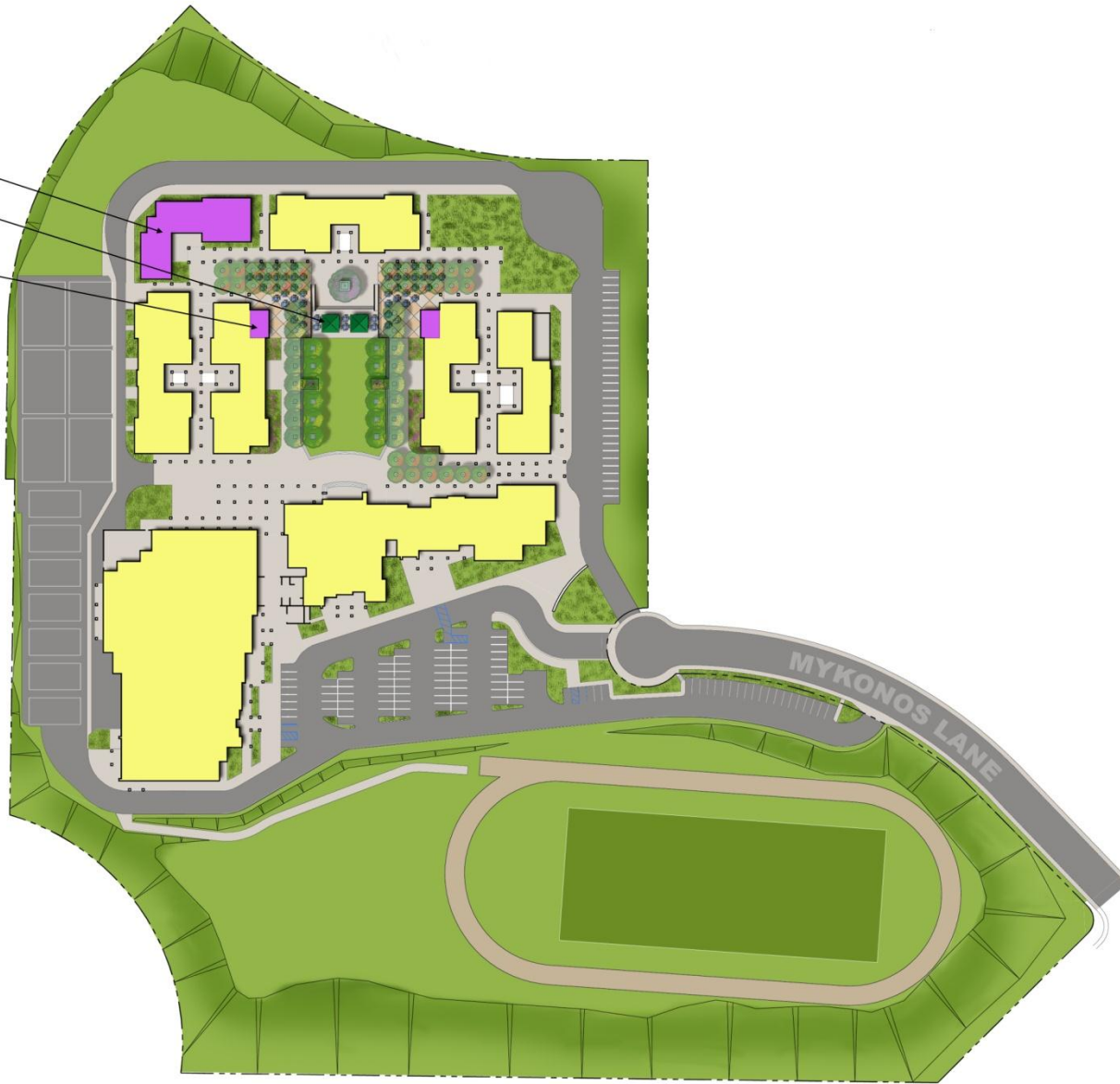


# South End – Middle Schools

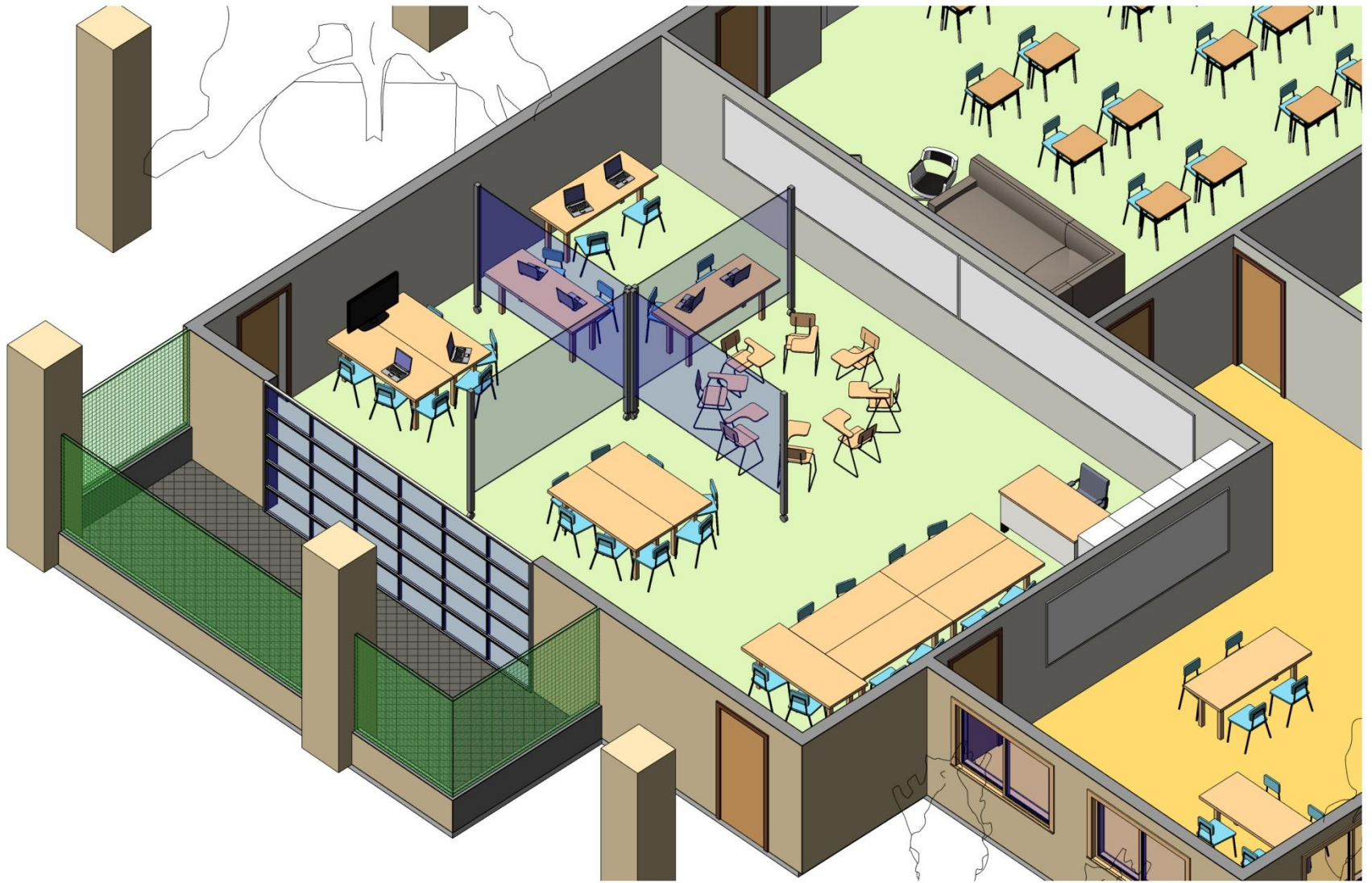
- Carmel Valley Middle School (1999)
- Preliminary Task Force Estimate: \$5,241,509

|                  |                                                                   |                                     |
|------------------|-------------------------------------------------------------------|-------------------------------------|
| <b>Must Do</b>   | Access Compliance Issues – Americans with Disabilities Act (ADA)  | <b>Meets or exceeds standards</b>   |
|                  | Fire and Life Safety Issues                                       | <b>Meets or exceeds standards</b>   |
|                  | Structural Safety Issues                                          | <b>Meets or exceeds standards</b>   |
|                  | Hazardous Materials Issues                                        | <b>Meets or exceeds standards</b>   |
|                  | Infrastructure Issues                                             | <b>Meets or exceeds standards</b>   |
|                  | Envelope Issues                                                   | <b>Meets or exceeds standards</b>   |
| <b>Should Do</b> | Upgrade to 21 <sup>st</sup> Century Learning Environment Standard | <b>Upgrade Required</b>             |
|                  | Core Facility Parity Issues; Library                              | <b>Meets or exceeds standards</b>   |
|                  | Core Facility Parity Issues; Administration                       | <b>Meets or exceeds standards</b>   |
|                  | Core Facility Parity Issues; Labs                                 | <b>Meets or exceeds standards</b>   |
|                  | Core Facility Parity Issues; Gym/MP                               | <b>Meets or exceeds standards</b>   |
|                  | Core Facility Parity Issues; Theater/ Arts                        | <b>Upgrade Required</b>             |
|                  | Core Facility Parity Issues; Athletics/Fields                     | <b>Meets or exceeds standards</b>   |
|                  | Improvements for Sustainable “Green” Design                       | <b>Upgrade Required</b>             |
|                  | Replace Portable Classrooms                                       | <b>Further Information Required</b> |
|                  | Create Community Joint Use Facilities                             | <b>Further Information Required</b> |
|                  | Resolve Site Circulation and Parking Issues                       | <b>Upgrade Required</b>             |

NEW MUSIC BUILDING  
RELOCATED SHADE  
STRUCTURES  
CLASSROOMS CONVERTED  
TO NEW FOODSERVICE  
OUTLETS

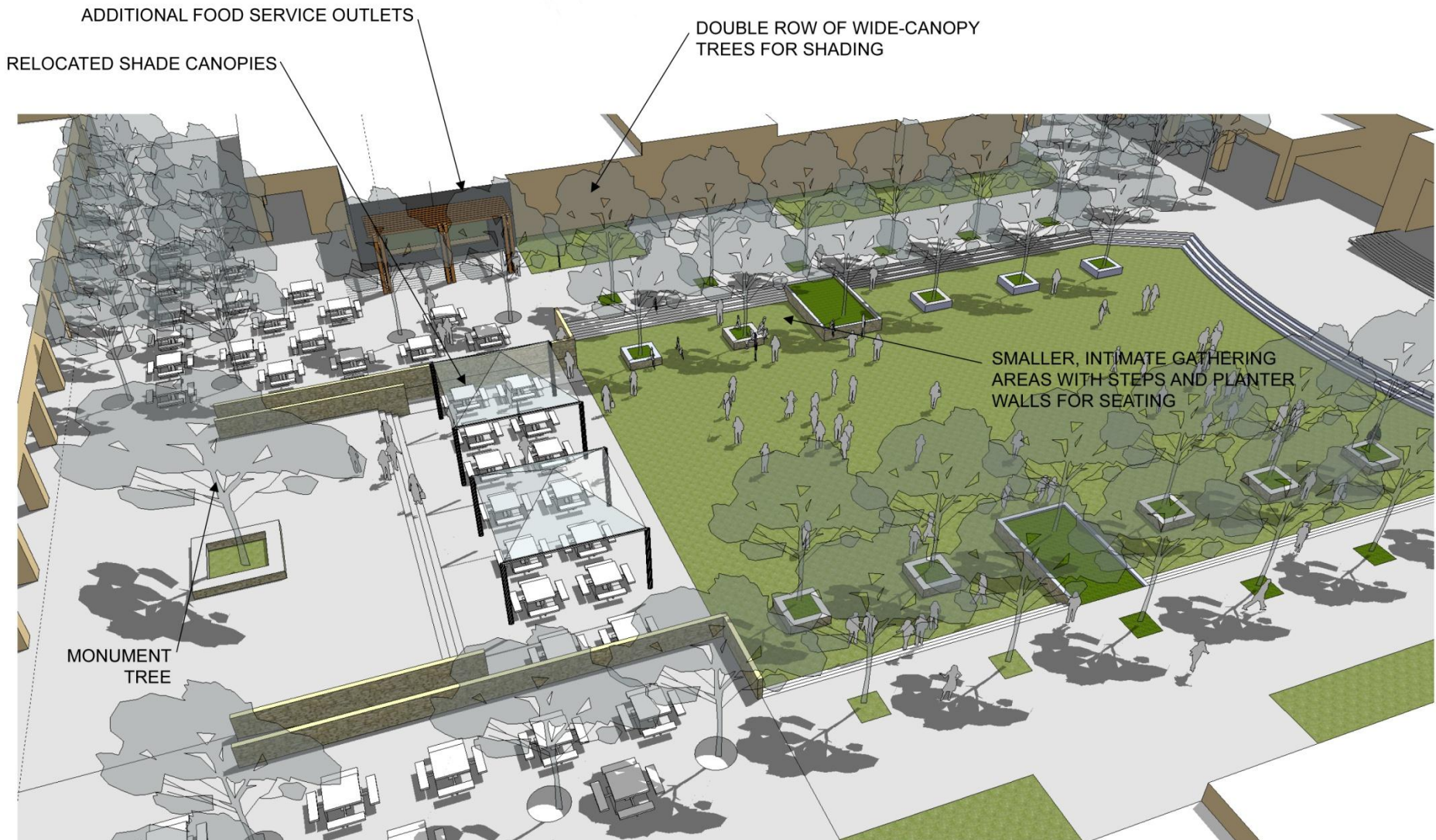


San Dieguito Union High School District  
**Carmel Valley Middle School Facilities Master Plan**  
**OVERALL SITE PLAN**



San Dieguito Union High School District  
**Carmel Valley Middle School Facilities Master Plan**  
**CLASSROOM RECONFIGURATION**



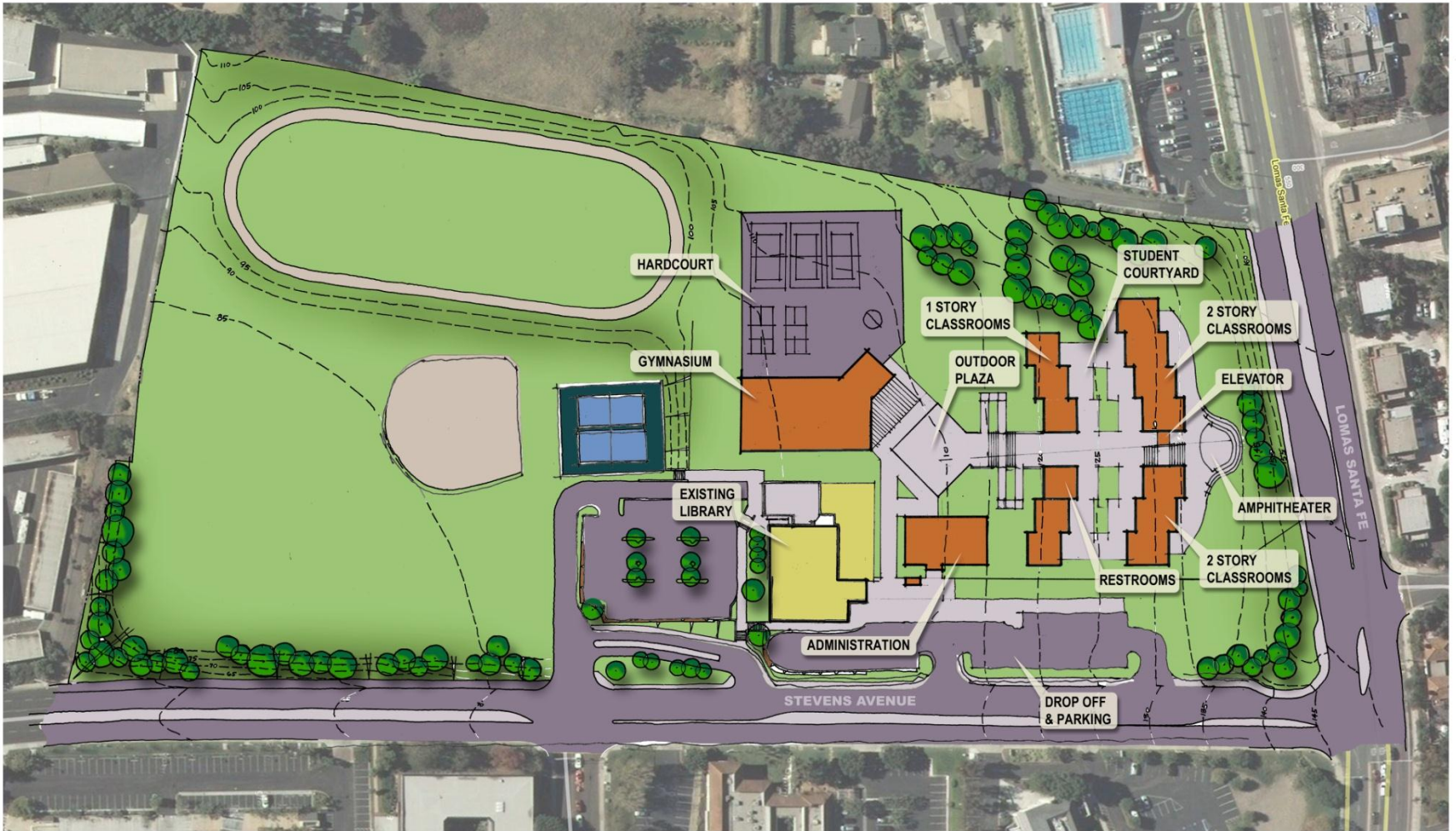


San Dieguito Union High School District  
**Carmel Valley Middle School Facilities Master Plan**  
**QUAD RECONFIGURATION**

- Earl Warren Middle School (1955)
- Preliminary Task Force Estimate: \$32,168,370

|                  |                                                                   |                                     |
|------------------|-------------------------------------------------------------------|-------------------------------------|
| <b>Must Do</b>   | Access Compliance Issues – Americans with Disabilities Act (ADA)  | <b>Upgrade Required</b>             |
|                  | Fire and Life Safety Issues                                       | <b>Upgrade Required</b>             |
|                  | Structural Safety Issues                                          | <b>Upgrade Required</b>             |
|                  | Hazardous Materials Issues                                        | <b>Upgrade Required</b>             |
|                  | Infrastructure Issues                                             | <b>Upgrade Required</b>             |
|                  | Envelope Issues                                                   | <b>Upgrade Required</b>             |
| <b>Should Do</b> | Upgrade to 21 <sup>st</sup> Century Learning Environment Standard | <b>Upgrade Required</b>             |
|                  | Core Facility Parity Issues; Library                              | <b>Meets or exceeds standards</b>   |
|                  | Core Facility Parity Issues; Administration                       | <b>Upgrade Required</b>             |
|                  | Core Facility Parity Issues; Labs                                 | <b>Upgrade Required</b>             |
|                  | Core Facility Parity Issues; Gym/MP                               | <b>Upgrade Required</b>             |
|                  | Core Facility Parity Issues; Theater/Arts                         | <b>Upgrade Required</b>             |
|                  | Core Facility Parity Issues; Athletics/Fields                     | <b>Meets or exceeds standards</b>   |
|                  | Improvements for Sustainable “Green” Design                       | <b>Upgrade Required</b>             |
|                  | Replace Portable Classrooms                                       | <b>Further Information Required</b> |
|                  | Create Community Joint Use Facilities                             | <b>Further Information Required</b> |
|                  | Resolve Site Circulation and Parking Issues                       | <b>Upgrade Required</b>             |





San Dieguito Union High School District  
**Earl Warren Middle School Facilities Master Plan**  
**SITE PLAN**





San Dieguito Union High School District  
**Earl Warren Middle School Facilities Master Plan**  
**EXTERIOR CONCEPT**





San Dieguito Union High School District  
**Earl Warren Middle School Facilities Master Plan**  
**EXTERIOR CONCEPT**

# Prototype Facilities:

- Torrey Pines High School
  - 21<sup>st</sup> Century Classroom
  - 21<sup>st</sup> Century Media Center
- Canyon Crest Academy
  - 21<sup>st</sup> Century Bio/Robotics Lab
- San Dieguito High School Academy
  - 21<sup>st</sup> Century Classroom
  - 21<sup>st</sup> Century Food Service
- La Costa Canyon High School
  - 21<sup>st</sup> Century Outdoor Learning Environment

# Additional Facilities:

- Middle School Site @ La Costa Valley
  - Task Force recommendation:
    - Middle School to accommodate 500 students

|                    | Enrollment<br>(Oct. '10) | Preferred Capacity | Long Range<br>Projections* |
|--------------------|--------------------------|--------------------|----------------------------|
| Diegueno MS        | 813                      | 800                | 705                        |
| Oak Crest MS       | 884                      | 800                | 873                        |
| Totals             | 1697                     | 1600               | 1578                       |
| Unhoused (Surplus) |                          |                    | (22)                       |

- Middle School Site @ La Costa Valley

- Task Force recommendation:

- Middle School to accommodate 500
- 

- Potential options for site in the interim:

- Develop Playfields

- General Purpose Fields for soccer/lacrosse
- Baseball – for use by La Costa Canyon High School to relieve facility at Diegueno MS

- General Purpose Building

- Possible Adult Ed programs
- Possible community center/on-line hub

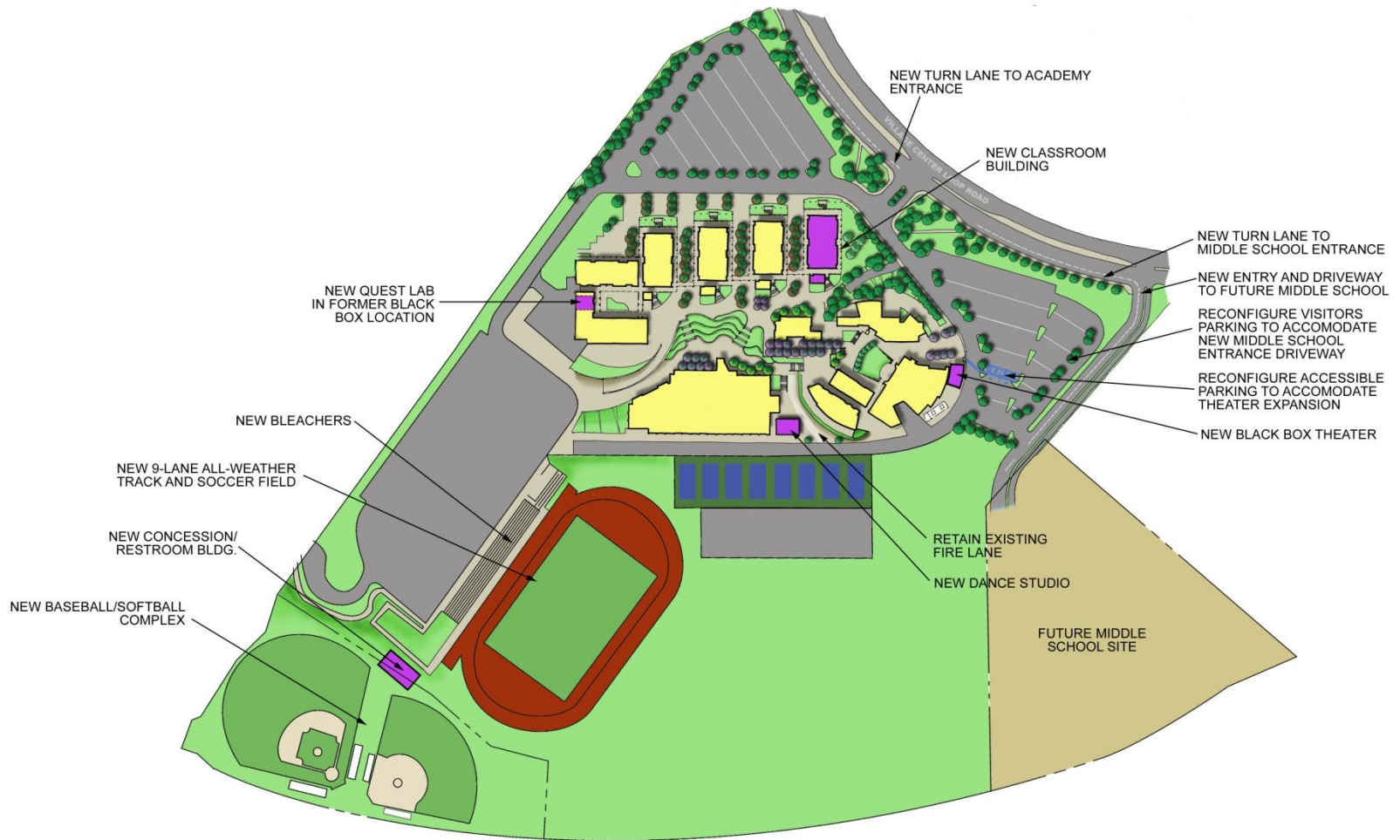
# Additional Facilities:

- Middle School Site @ Pacific Highlands Ranch
  - Task Force recommendation:
    - Exercise property option for land adjacent to Canyon Crest Academy
    - Middle School to accommodate 1,000. Initial build to 500.

|                    | Enrollment<br>(Oct. '10) | Preferred Capacity | Long Range<br>Projections* |
|--------------------|--------------------------|--------------------|----------------------------|
| Carmel Valley MS   | 1469                     | 1000               | 1675                       |
| Earl Warren MS     | 704                      | 500                | 803                        |
| Totals             | 2173                     | 1500               | 2478                       |
| Unhoused (Surplus) |                          |                    | 978                        |

- Middle School Site @ Pacific Highlands Ranch
    - Task Force recommendation:
      - Exercise property option for land adjacent to Canyon Crest Academy
      - Middle School to accommodate 1,000. Initial build to 500.
- 

- Reasons to proceed with recommendation:
  - Land cost escalation – 5%
  - Current enrollment in excess of preferred capacity
  - Areas in the south end continue to be developed
    - PHR: 75 units
    - Crosby: 50 units
    - Other CFD & Infill: 28 units
    - TOTAL in 10/11: 153 units
  - 4-5 years from today to plan and build



San Dieguito Union High School District  
**Canyon Crest Academy Facilities Master Plan**  
**OVERALL SITE PLAN**



## Next Steps:

- Construction Management Cost Estimating
- Prioritizing
- Return to Site Committees in Fall
- Return to Board in October/November